

PRODUCT SPECIFICATION SHEET

IBC Tilting Stand (with Tall Adjustable Legs)

- The IBC Tilting Stand is designed to keep your IBC at an ergonomic height for decanting
- Designed to prevent the operator from unnecessary strain when operating
- Steel Construction with a powdercoated finish
- Platform Height: 500-650mm
- Platform Size: 1250x1250mm

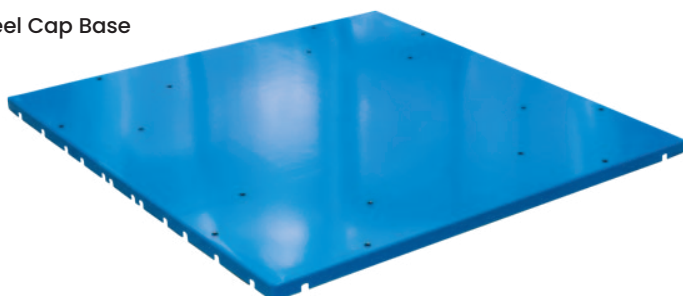


TR7905 Castor Kit
pictured with TR7910



IBC Container
not included

TR7904 Steel Cap Base



Code	Description	Capacity (kg)	Unit Weight (kg)
TR7911	IBC Tilting Stand with Tall Adjustable Legs	2000	148
TR7904	Steel Cap to suit TR7911		24.5
TR7905	Castor Kit to suit TR7911	2000	11
TR7906	Handle to suit TR7911		4.5